



## FINAL OPPORTUNITY FOR TOBACCO GAP TRAINING

Todd County Extension is hosting a Tobacco GAP training on April 10 from 9:00 - 11:00 am. This is the last opportunity for this crop year to complete Tobacco GAP training. Please give us a call at 270-265-5659 to reserve your seat. New tobacco production guides will be available at the training.



## PRIVATE APPLICATOR TRAINING & CERTIFICATION

Is your private applicator certification up to date? We have mailed two rounds of letters to those whose cards expired in 2024. We have two more trainings scheduled this spring: March 27 at 6:00 pm OR March 28 at 9:00 am. Get your certification renewed before cropping season is in full swing.

## CAIP ED - FARM RECORDKEEPING

Farm Recordkeeping is scheduled for April 10 at 6:00 pm. **This class is a must for beginning farmers or those who are taking over the reins of a farming operation. It will also benefit experienced farmers. Learn about ag sales tax exemption and how to keep better records to prepare for tax season, cost-share applications, financial statements, and more.** The class will also count as CAIP cost-share education since it's important for all ag enterprises.

Traci Johnson  
Agriculture & Natural Resources Agent

### What's Inside?

Wheat Field Day . . . . .	page 2
Italian Ryegrass Field Day . . .	page 2
Upcoming Events . . . . .	page 3
Manage the Spring Flush . .	page 4-5
Horseman's Association . . .	page 6

Todd County Extension · 240 Pond River Rd · Elkton, KY 42220 · 270-265-5659

### Cooperative Extension Service

Agriculture and Natural Resources  
Family and Consumer Sciences  
4-H Youth Development  
Community and Economic Development

### MARTIN-GATTON COLLEGE OF AGRICULTURE, FOOD AND ENVIRONMENT

Educational programs of Kentucky Cooperative Extension serve all people regardless of economic or social status and will not discriminate on the basis of race, color, ethnic origin, national origin, creed, religion, political belief, sex, sexual orientation, gender identity, gender expression, pregnancy, marital status, genetic information, age, veteran status, physical or mental disability or reprisal or retaliation for prior civil rights activity. Reasonable accommodation of disability may be available with prior notice. Program information may be made available in languages other than English. University of Kentucky, Kentucky State University, U.S. Department of Agriculture, and Kentucky Counties, Cooperating. Lexington, KY 40506



Disabilities accommodated with prior notification.

# *Italian Ryegrass Control Field Tour*

Thursday, March 27, 2025

9 a.m. to 11:30 a.m. CDT

**Please meet at the Caldwell County Extension Office**

1025 U.S. Highway 62 West, Princeton, KY

Sign-in begins at 8:30 a.m. CDT

A caravan will proceed to the UKREC in Princeton for plot tours of Italian ryegrass research.

Click link or scan QR Code to register

[https://uky.az1.qualtrics.com/jfe/form/SV\\_2c6KX2NmiqEp1TE](https://uky.az1.qualtrics.com/jfe/form/SV_2c6KX2NmiqEp1TE)



# **UK Wheat Field Day**

**MAY 13th, 9:00 am-12:00 pm**

UK Research and Education Center Princeton, KY



**Wheat Science Group**



**Grain and Forage  
Center of Excellence**

## **UPCOMING AG EVENTS**

Call 270-265-5659 to reserve your spot for events held at Todd County Extension.

**Private Pesticide Applicator Training**, March 27 at 6:00 pm, Todd Co. Extension

**Private Pesticide Applicator Training**, March 28 at 9:00 am, Todd Co. Extension

**Tobacco GAP Training**, April 10 at 9:00 am, Todd Co. Extension

**Farm Recordkeeping**, April 10 at 6:00 pm, Todd Co. Extension

**Beef Quality & Care Assurance Certification**, April 24 at 6:00 pm, Todd Co. Extension

**Beef Quality & Care Assurance Certification**, April 25 at 9:00 am, Todd Co. Extension

**Beginning Grazing School**, April 29-30, Logan Co. Extension

<https://forages.ca.uky.edu/events>



Interest meeting to reform the  
Christian County—Todd County—Trigg County Chapters of the  
Kentucky Young Farmer Association.

---

# **SAVE THE DATE**

---

**Friday, March 28th at 6:00 PM**

Hopkinsville Elevator Activity Room  
1627 Jan Drive, Hopkinsville Kentucky 42240

---

**Speaker: Dr. Tony Brannon from WAVE AG Initiative**

**DINNER PROVIDED**

*Todd County farm families, this meeting will help determine interest in re-forming a local chapter of the **Kentucky Young Farmer Association**. The association is family oriented and open to members of all ages. Learn more at: <https://www.kyyoungfarmers.com/>*

# Strategies for Managing the Spring Flush

Source: Chris D. Teutsch, University of Kentucky Forage Specialist

Photos: Traci Johnson, Todd County Extension Agriculture Agent

In March and April grass growth in the Commonwealth's pastures goes from 0 to 60 mph in just a few short weeks. We often find ourselves impatiently waiting for grass to start growing and then just a few short weeks later wondering what we are going to do with it all! The following suggestions can help you to optimize spring grass growth and utilization.

**Implement rotational grazing.** To fully utilize the spring flush of pasture growth YOU must be in control of grazing. In a continuous grazing system, the cows are in charge. By utilizing rotational stocking, you start to make the decisions. Implementing a rotational stocking system may be as simple as closing some gates or stringing up some polywire.

**Feed a little hay in late winter and early spring.** It is tempting to just let cattle roam and pick pastures for early grass growth, but this can set pastures back and reduce overall dry matter production. It is important to restrict cattle to one area, feed a little hay, and allow pastures to accumulate 4 to 5" of growth before starting to graze.

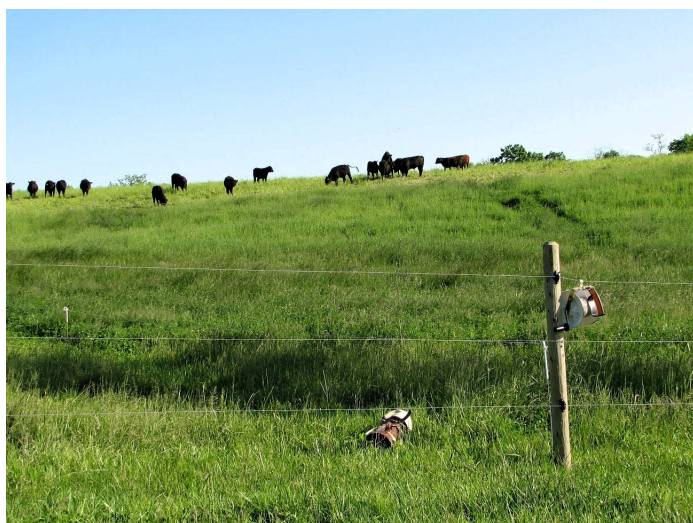
**Start grazing at 4 to 5" of growth.** Another common mistake that graziers make is waiting too long to start grazing. If you wait until the first paddock is ready to graze, 8-10" of growth, by the time you reach the last paddock it will be out of control. Starting a little bit early allows you to establish a "grazing wedge" (Figure 1).

**Rotate animals rapidly.** It is important to realize that grazing pastures closely and repeatedly as they initiate growth in early spring can reduce production for the entire season. Therefore, it is important to keep animals moving rapidly through the system. The general rule is that if grass is growing rapidly then your rotation should be rapid. This will allow you to stay ahead of the grass by topping it off and keeping it in a vegetative state.

**Do not apply spring nitrogen.** Applying nitrogen in the spring will make the problem of too much grass at once even worse. In many cases you are better off applying nitrogen in late summer or early fall to stimulate growth for winter stockpiling.

**Remove most productive paddocks from rotation and harvest for hay.** Graze all paddocks until the pasture growth is just about to get away from you and then remove those productive paddocks from your rotation and allow them to accumulate growth for hay or baleage harvest.

**Increase stocking rate in the spring.** An alternative to harvesting excess forage as hay or baleage is to increase your stocking rate by adding more animal units in the spring and then decreasing animal



numbers as plant growth slows due to higher temperature during the summer months. While this is a viable approach, it is not practical on smaller or part-time operations.

**Even out seasonal distribution of forage by adding warm-season grasses.** Adding a well-adapted warm-season grass that produces most of its growth in July and August would allow you to concentrate grazing on your cool-season paddocks during periods of rapid growth (spring flush). After cool-season grass growth slows in late spring and early summer, animals can be shifted in the warm-season paddocks for summer grazing.

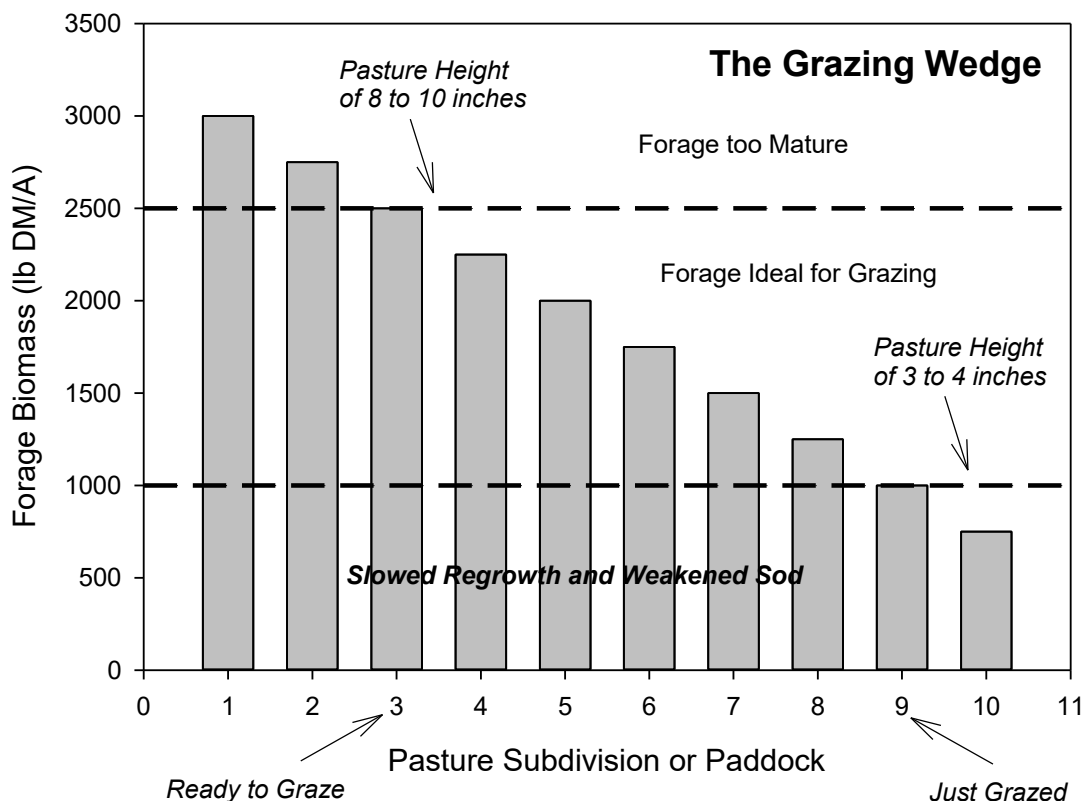
**Bush-hog out-of-control pastures.** The benefits of clipping include maintaining pastures in a vegetative state, encouraging regrowth, and controlling weeds. Clipping pastures costs money, so make sure that the primary reason for bush-hogging is pasture management, not aesthetics.

**Stockpile out-of-control pastures for summer grazing.** Although forage quality decreases as the plant matures, the quality of spring stockpiled pasture is sufficient for dry cows and in some cases can result in reasonable gains on growing animals during the summer months. This is especially true if using novel endophyte tall fescue and the pastures were clipped at the early boot stage to promote vegetive regrowth. This could be a cost-effective and simple way to provide additional grazing during the summer months.

Managing spring grass can be challenging. It is important to find that “sweet spot” for starting to graze, not too early and not too late! Hopefully one or more of the above tips will help you optimize your spring grass!



**Figure 1.** The “grazing wedge” simply refers to having pasture subdivisions or paddocks at varying stages of regrowth from just grazed to ready to graze.



# Todd County Extension Horseman's Association Interest Survey

Todd County Extension is looking into the possibility of forming a Horseman's Association in Todd County. The association would be open to any horse owner or enthusiast in the county or surrounding area. Membership would allow individuals to schedule the arena for ride nights/days (not for financial gain) among other benefits listed on this flyer.



## Requirements

- Annual \$100 Dues/Household
- Sign a liability waiver prior to riding in arena each time.
- Attend a horseman's association meeting within the year.
- Be a steward & supporter of the new arena and Extension's Mission

## Benefits

- Liability insurance coverage of 1 million dollars when riding in the Extension arena
- Up to three exclusive arena uses/rentals annually *(free of charge, compared to \$100 charge per day) (financial gain events do not apply - see policy)*
- Invitation to free "open ride nights" for members, hosted by the Horseman's Association.
- Connect with other equine owners and enthusiasts & advance your riding skills & knowledge.



## Survey Questions

Point your camera at the QR Code and complete the survey, or bring this form to the Extension Office with your survey answers.

**Are you interested in joining a new Todd County Horseman's Association?**

Yes  No

**Are you willing to pay \$100 annual dues per household for the benefits listed on the flyer?**  Yes  No

**Do you currently have your own arena to ride?**  Yes  No

**Is \$100 annually a good price for the benefits listed?**  Yes  No

**Comments** \_\_\_\_\_

Todd County Extension Service  
 240 Pond River Road  
 Elkton, KY 42220  
 270-265-5659

